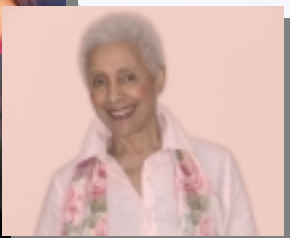


Services

Whether you need a little help or 24-hour care we provide a full range of services. If you don't see it on the list, simply give us a call.

- * Care Assessments
- * Case Management
- * Care Home Placement
- * Estate Management
- * Errands
- * Medication pick-up & drop-off
- * Transportation
- * Travel Assistance
- * Health Care—various levels
- * Respite Care
- * Housekeeping
- * Periodic Housecleaning
- * Financial Advice Referrals
- * Legal Advice Referrals
- * Insurance Advice Referrals
- * Companionship
- * Socialization
- * Friendly Visits



Caregivers4seniors

808-392-5918
Info@caregivers4seniors.com
P.O. Box 88776, Honolulu, HI 96830
www.caregivers4seniors.com

We are a local company that provides assistance for the elderly and their families when extra care is needed to maintain quality of life. We offer Care Assessments, Case Management, Caregiver Referrals and Adult Residential Care Home Placement. We also offer Estate Management for the total health and well-being of the client. For information on any of these services, please call 392-5918 or email info@caregivers4seniors.com.

I have worked as a senior care professional for several decades. With my comprehensive knowledge and experience, I am able to assist clients and their families in making an informed, appropriate, and loving home placement choice.

Grecia Hill

Testimonials

I have not forgotten your kindness to our family. Your assistance during my mother's last years was deeply appreciated... B.T. Our family was blessed to find you as a caregiver. Your dedication and caring to our mother made us feel you were part of our family... J.P.



Referral Services for Seniors



Helping families
find the resources
to care for their seniors

808-392-5918

Referral Services Caregivers

Caregiving Referrals

Staying at home whenever possible is most often the best solution when you or your loved one needs additional care. We help provide that care, starting with a comprehensive assessment. Some of the areas we will look at are:

- Level of care needed
- Recommendations from physicians
- Personal preferences
- Options available for home situation
- Financial considerations
- Live-in or part-time positions
- Full-time or 24 hour care
- Room & Board / Caregiving Exchange
- Respite care

The level of care needed will determine the level of caregiver we refer, such as:

* **Companions**

- Supervision
- Running Errands
- Provide Transportation
- Light Housekeeping

* **C.N.A.'s (Certified Nurses Aide)**

- Grooming including Oral hygiene,
- bathing and dressing
- Toileting
- Mobility, Transferring and Positioning
- Medication Reminders
- Meal Preparation
- Light Housekeeping
- Shopping

Caregivers4seniors

* **L.P.N.'s (Licensed Practitioner Nurse)**

- basic bedside care
- take vital signs
- prepare and give injections
- apply dressings
- observe and report adverse reactions to medications or treatments

* **R.N.'s (Registered Nurse)**

- highly skilled level of care
- more complex medical needs
- injections
- intravenous therapy
- ventilator care
- disease treatment
- patient assessments

* **Also Available:**

- Housekeepers
- Periodical Cleaning Services
- Case Management
- Estate Management

* *Rates vary depending on the type of service required*

For more information,
please visit our website at:
www.caregivers4seniors.com

or contact us at:

Tel: 808-392-5918

Fax: 808-923-5918

email: info@caregivers4seniors.com

Referral Services Care Homes

Care Home Referrals

Sometimes, staying in the home is not an option. When caregiver services are not enough, we will help with placement in an Adult Residential Care Home (A.R.C.H.). All care homes we refer are fully licensed by the State of Hawaii and are ICF levels (Intermediate Care Facility). This service includes:

- * Initial client care assessment
- * Matching needs with appropriate homes
- * Developing placement plans
- * Accompanying family members on inspection visits to prospective care homes
- * Placement Assistance
- * Follow-up visit with family members

Once placed in the Care Home, we can also provide Case Management on an individual basis, communicating updates regularly with family members. What is important to you is important to us!

